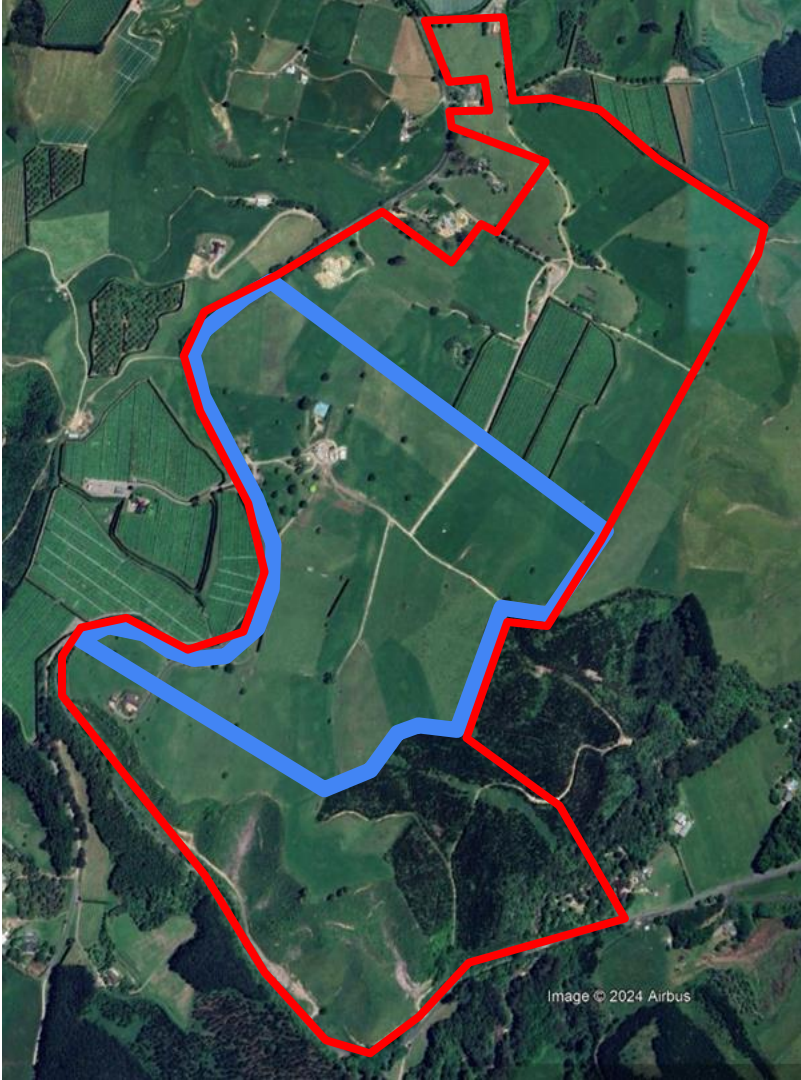


The Fowler, Riley, Marshall, McLeod and Donald families arrived to occupy the first five dairy farms.



**The Fowler family came to this part-house, (and its out-house) in 1955.
Gary, Brian, Linda, John, and Carolyn (in front).
(Terry was born in 1961)**



Farming Within Nutrient Limits

- 26.9% Reduction in N loss
- Reduced feed inputs
- Less synthetic N
- Plantain = 15% reduction



Finding the sweet spot...

	2018	2023	Difference
Production (KgMS/ha)	1227	979	20%
Milk revenue @ \$7.50 payout (\$/ha)	\$9,203	\$7,343	20%
Imported Feed (KgDM/ha)	2913	974	
Imported Feed Cost (\$/ha)	\$1,165	\$390	67%
Synthetic N Applied (Kg N/ha)	103	23	
Synthetic N Cost (\$/ha)	\$291	\$65	78%
Gross Margin (\$/ha) (Not all costs included)	\$7,746	\$6,888	11%
GHG (Tonnes CO2 eqv./ha)	9702	8634	11%
Nitrogen Loss (Kg/ha)	53	42	21%
Land Value (\$/ha) ???	\$45,000	\$35,000	22%

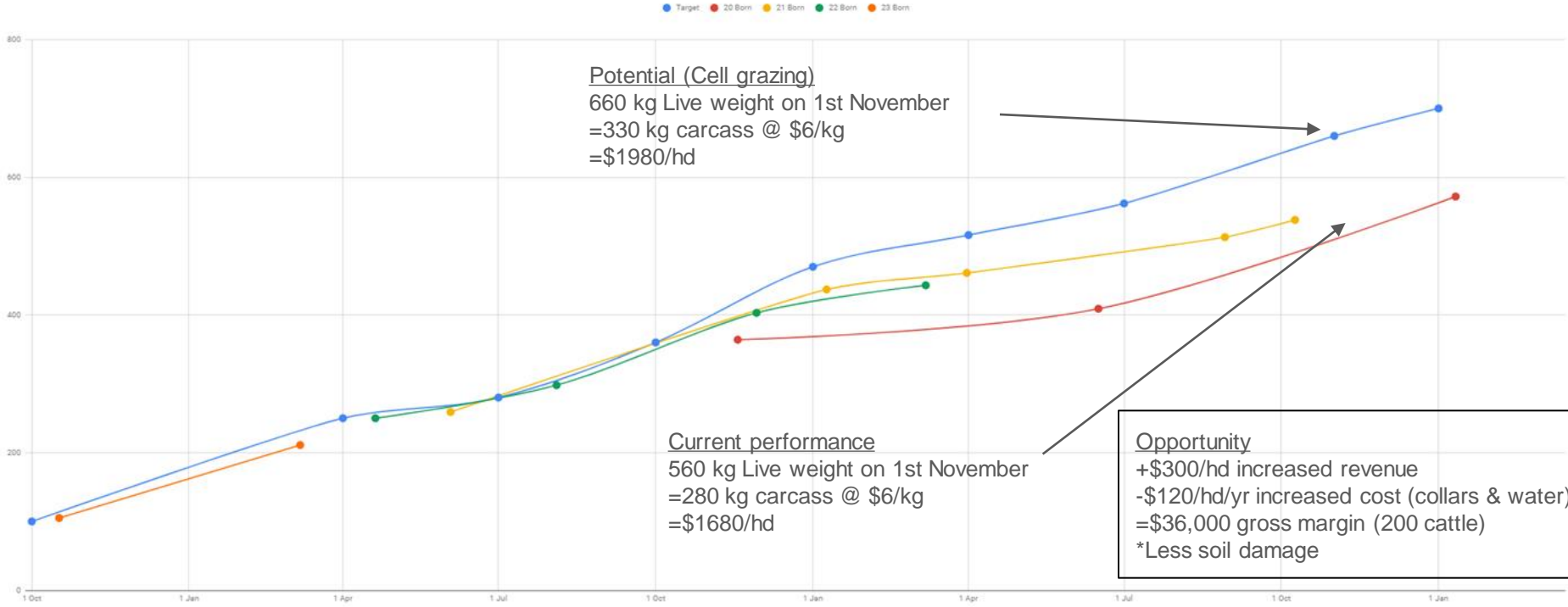
Profitable hill country

- 2023/24 forecast \$112/ha
 - (Beef + Lamb economic service)
- Pine trees & Carbon
 - \$2,000/ha vs \$500/ha
- Dairy / Beef integration
 - 17 vs 28 kg CO₂/kg Beef
- Cell grazing / Collars
 - Small mobs
- Native planting
 - \$6000/ha vs \$18,000/ha?





Long Term Steers Weights





Profitable hill country

- 2023/24 forecast \$112/ha
 - (Beef + Lamb economic service)
- Pine trees & Carbon
 - \$2,000/ha vs \$500/ha
- Dairy / Beef integration
 - 17 vs 28 kg CO₂/kg Beef
- Cell grazing / Collars
 - Small mobs
- Native planting
 - \$6000/ha vs \$18,000/ha?







